



the art of *inspiration*

At Dolce by Wyndham La Hulpe Brussels, we believe a meeting is not about the number of attendees, the business at hand or the players in the room. Instead, meeting is about going beyond, opening your mind to new ideas, finding unique ways to think and leaving with more than when you arrived.

Located in the heart of the Sonian forest, a UNESCO World Heritage Site and only 15 km from Brussels city center, Dolce La Hulpe Brussels is a 4-star conference hotel inspiring discovery.

Guest Rooms & Suites

All of our 264 rooms and suites offer a stunning view on the Sonian forest, an elegant and comfortable design and are equipped with modern technology.

BEDROOMS

- 141 Superior Rooms
- 41 Deluxe Rooms
- 46 Executive Rooms
- 24 Executive Rooms with sofa bed
- 11 Junior Suites
- 1 Sequoia Suite
- 5 Rooms accessible with Wheelchair

ROOM FACILITIES

- King Size bed – twin beds
- Flat screen television
- Large work desk
- Free wireless Internet
- Inroom fridge
- Bathrooms with rain shower or bath
- Coffee & tea making facilities

Restaurant and Bars

- “Argan” buffet restaurant, offering a culinary experience in symbiosis with Nature
- “Brasserie 135” restaurant with terrace, offering a fine dining menu inspired by seasonal produce
- “Badian” lobby bar, with lounge terrace
- “Oak Bar” lounge night bar

Activities

- “Spa Cinq Mondes” renowned expert in world spa treatments inspired by ancestral cultures who invites you to a sensory journey
- Indoor pool, sauna and hammam
- Fitness centre
- Wellness parcours
- Outdoor tennis courts
- Jogging
- Biking
- Exclusive Escape Rooms: The Cube and The Sphere
- Theme Evenings
- More than 50 team building activities
- Château de La Hulpe
- Folon Foundation
- Golf Courses nearby

Meeting & Events

With its state-of-the-art technology supported by an onsite A/V team and delicious food served at the Nourishment Hub, our ultra-modern 4500m² – 48.500 sq ft Conference Centre gathers all the comfort, professionalism and tranquillity which are necessary to create a perfect venue for productive meetings.

Capacity chart

- 4500 sqm meeting space – 4500m² – 48 000 sq ft
- More than 40 flexible meeting rooms
- 2 auditoria seating 150 and 500 seats respectively





Capacity Chart

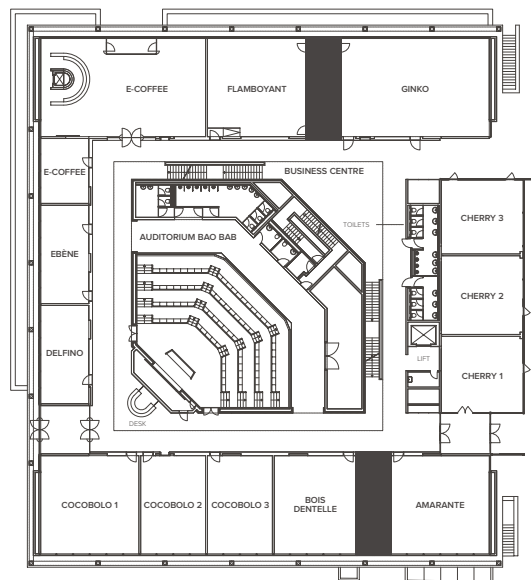
Meeting Room	Total m ²	Total sq ft	Measures mts	Measures ft	Ceiling Height mts	Ceiling Height ft	Classroom	Theatre	Banquet 10	Reception	Boardroom	U-Shape	H-Square	Cabaret
Auditoriums														
Canopée**	495	5328	-	-	-	-	500	500	-	-	-	-	-	-
Baobab	354	3810	-	-	-	-	150	-	-	-	-	-	-	-
Meeting Rooms (Ground Floor)														
Amarante	112	1206	10.6 x 10.6	35x35	3,3	11	40	80	-	-	20	28	32	42
Bois dentelle	93	1001	8.8 x 10.6	29x35	3,3	11	40	60	-	-	16	24	32	35
Cherry	219	2357	25.2 x 8	83x26	3,3	11	80	132	-	-	52	-	44	77
Cherry 1	63	678	7.3 x 8	23x26	3,3	11	22	24	-	-	16	12	16	21 (3x7)
Cherry 2	113	1216	10.6 x 7.9	35x26	3,3	11	36	60	-	-	20	18	24	18 (3x6)
Cherry 3*	43	463	7.3 x 8	23x26	3,3	11	18	24	-	-	16	12	16	12 (2x6)
Cocobolo	260	2799	24.4 x 10.6	80x35	3,3	11	130	180	-	-	48	52	60	80
Cocobolo 1	112	1206	10.6 x 10.6	35x35	3,3	11	40	80	-	-	16	26	32	36
Cocobolo 2	74	797	7 x 10.6	23x35	3,3	11	24	50	-	-	12	16	24	28
Cocobolo 3	74	797	7 x 10.6	23x35	3,3	11	24	50	-	-	12	16	24	28
Delfino	55	592	10.6 x 5.2	35x17	3,3	11	16	30	-	-	20	18	20	-
Ebene	55	592	10.6 x 5.2	35x17	3,3	11	16	35	-	-	20	18	20	-
E-coffee	187	2012	10.6 x 17.7	35x58	2,7	9	-	-	-	-	-	-	-	-
E-coffee privé	36	387	7 x 5.2	22x17	3,3	11	-	-	-	45	8	8	-	-
Flamboyant	112	1206	10.6 x 10.6	35x35	3,3	11	40	84	-	-	20	28	32	42
Ginko	170	1830	16 x 10.6	52x35	3,3	11	80	120	-	-	32	38	48	63
Meeting Rooms (First Floor)														
Teck	170	1830	16 x 10.6	52x35	3,3	11	80	120	-	-	30	38	48	63
Imbuia	170	1830	16 x 10.6	52x35	3,3	11	80	120	-	-	30	38	48	63
Palissandre	112	1206	10.6 x 10.6	35x35	3,3	11	40	80	-	-	20	28	32	42
Mahogany	112	1206	10.6 x 10.6	35x35	3,3	11	40	80	-	-	24	26	32	42
Snakewood	93	1001	8.8 x 10.6	29x35	3,3	11	40	60	-	-	16	24	32	35
Jatoba	93	1001	8.8 x 10.6	29x35	3,3	11	40	60	-	-	16	24	32	35
Kawi	74	797	7 x 10.6	23x35	3,3	11	24	50	-	-	12	16	24	28
Rosewood	74	797	7 x 10.6	23x35	3,3	11	24	50	-	-	12	16	24	28
Mangrove 1	36	388	7 x 5.2	23x17	3,3	11	12	22	-	-	10	12	14	-
Mangrove 2	40	431	7.6 x 5.2	25x17	3,3	11	12	26	-	-	12	12	14	-
Mangrove 3	46	495	8.9 x 5.2	29x17	3,3	11	16	26	-	-	12	14	16	-
Mangrove 4	55	592	10.6 x 5.2	35x17	3,3	11	16	35	-	-	18	18	20	-
Breakout Rooms (Oasis Floor)														
Pomegranate	66	710	9.4 x 7	31x23	2,5	8	24	40	-	-	18	20	24	18
Tamarillo	65	700	9.4 x 6.9	31x23	2,5	8	24	36	-	-	18	20	24	18
Pitaya	64	689	8.8 x 7.2	29x24	2,5	8	24	36	-	-	14	20	24	18
Acerola*	56	603	9.7 x 5.8	32x19	2,6	9	20	42	-	-	18	20	24	18
Carambole	51	549	9.7 x 5.2	32x17	2,5	8	16	30	-	-	18	18	22	18
Fig	51	549	9.7 x 5.3	32x17	2,6	9	16	30	-	-	18	16	20	18
Guava	51	549	9.7 x 5.3	32x17	2,6	9	16	30	-	-	18	16	20	18
Kumquat	51	549	9.7 x 5.2	32x17	2,6	9	16	30	-	-	18	16	20	18
Kiwano	51	549	9.7 x 5.3	32x17	2,6	9	16	30	-	-	18	16	20	18
Litchi	51	549	9.7 x 5.2	32x17	2,6	9	16	30	-	-	18	16	20	18
Mango	51	549	9.7 x 5.3	32x17	2,6	9	16	30	-	-	18	16	20	18
Ramboutan	51	549	7 x 7.3	23x24	2,5	8	16	30	-	-	14	16	20	18
Redwood														
Redwood**	750	8073	39.6 x 18.9	131x62	3,3	11	300	600	570	625	80	114	128	320 at tables of 8
Redwood 1**	169	1819	11.6 x 15.4	38x50	3,3	11	70	120	110	140	-	36	44	64 at tables of 8
Redwood 2**	162	1744	10.8 x 15.4	35x50	3,3	11	70	120	110	140	-	34	46	56 at tables of 8
Redwood 3**	258	2777	16.9 x 15.4	54x50	3,3	11	120	180	200	215	-	52	60	80 at tables of 8

*Without daylight. **Outside of conference centre. ***With indirect daylight.

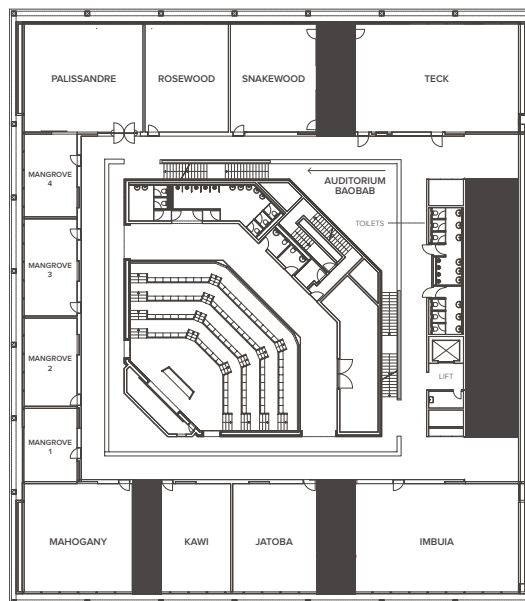
Floor Plans



OASIS FLOOR



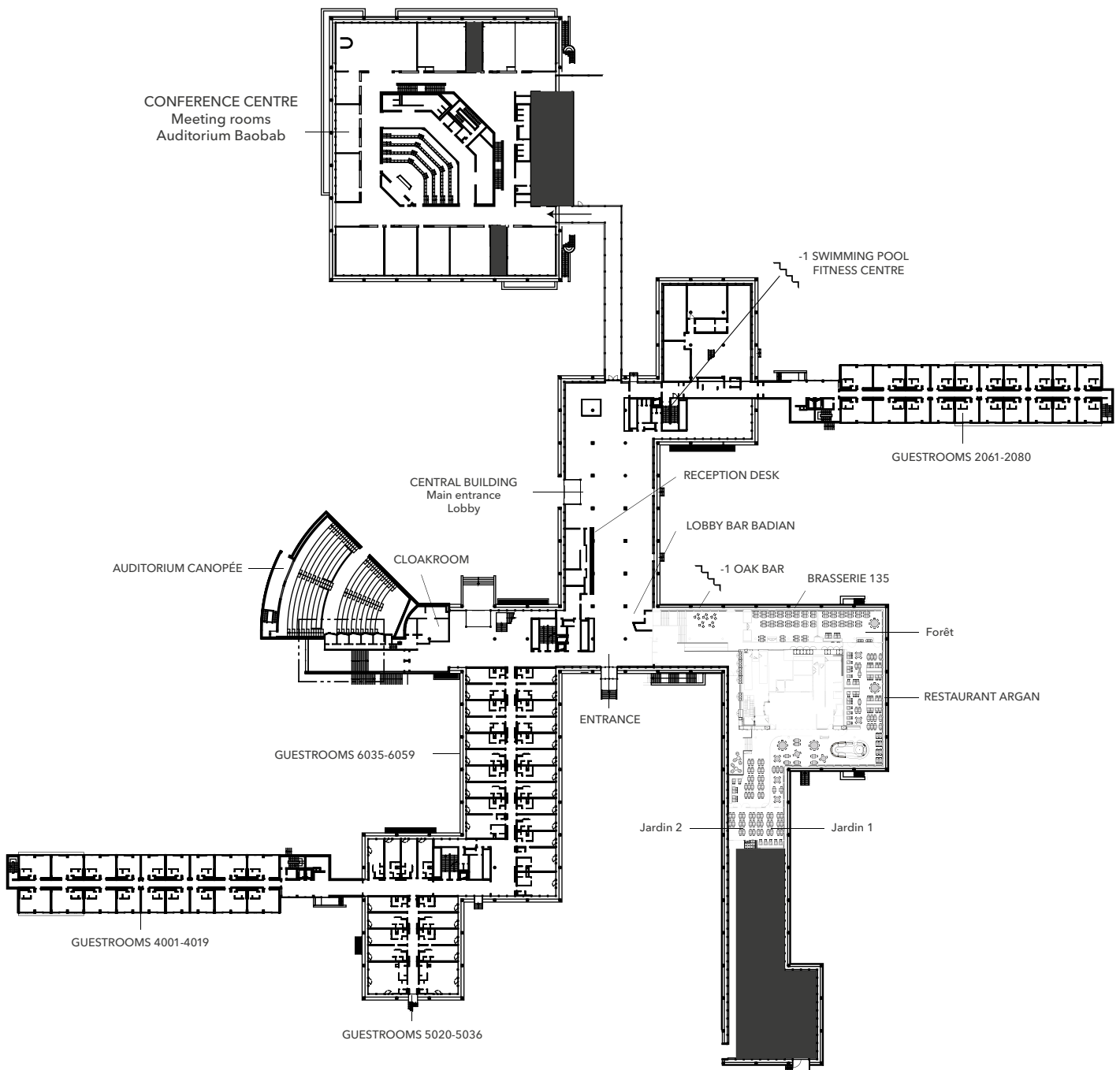
GROUND FLOOR



FIRST FLOOR



Floor Plan Ground Floor



Floor Plan First Floor

